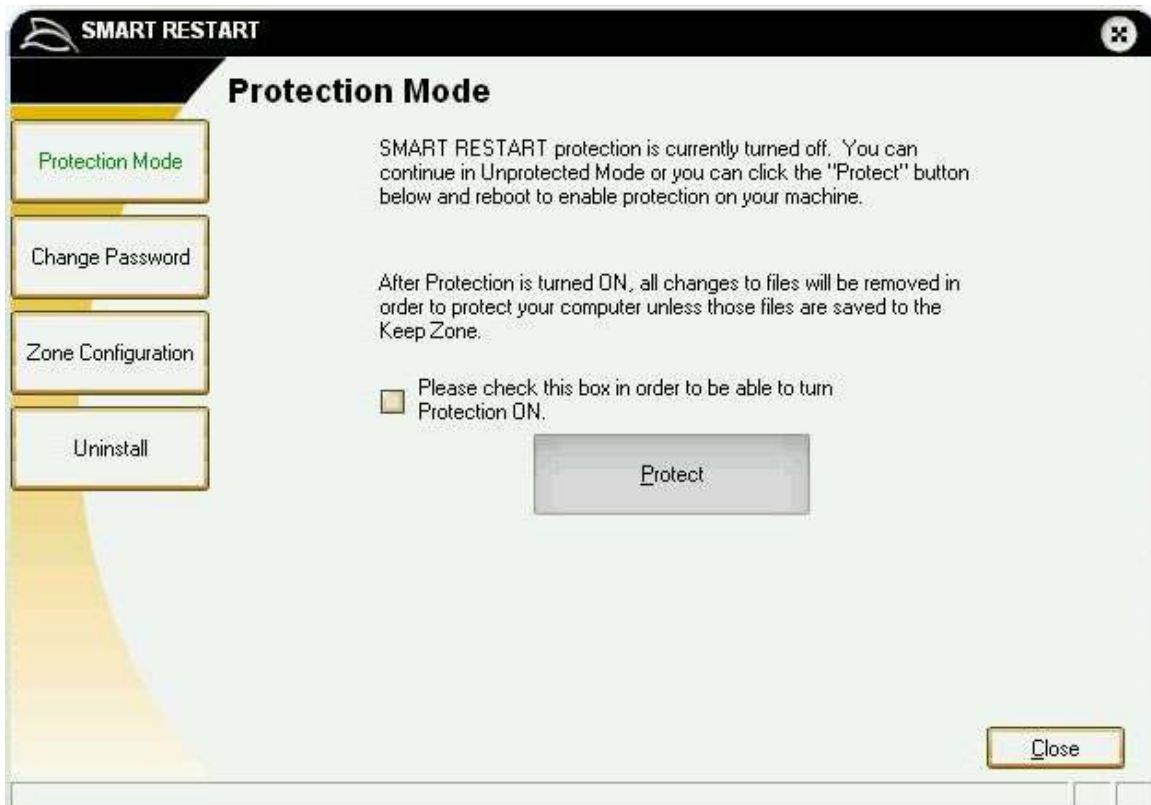


Protection Mode

To switch the protection status of SMART RESTART from "ON" to "OFF" or vice versa, click the "Protection Mode" button on the interface.

Turning SMART RESTART Protection ON

If protection is currently disabled (OFF) and you wish to enable, check the box to activate the "Protect" button. Checking the check box signifies that you have read the disclaimer on the screen which states that after Protection is turned ON, all changes to files will be removed in order to protect your computer unless those files are saved in the Keep Zone. Once the "Protect" button is enabled, click it to turn ON protection. You will then be prompted to enter your password. After you enter your password, you will be prompted to restart your computer. Protection will be turned on ONLY after you restart.



Turning SMART RESTART Protection OFF

If protection is currently enabled and you wish to disable, click the **“Unprotect”** button. You will then be prompted to enter your password, and prompted a second time to restart the computer.

