

# **Changing the Size of the Temporary Zone**

## **Introduction:**

The temporary zone is the area SMART RESTART™ uses to write to when protection is enabled. When your computer boots up and the system begins writing to the drive, the SMART RESTART™ software redirects those system writes to the temporary zone. As time goes on this temporary zone slowly becomes full. Rebooting your computer causes SMART RESTART™ to go back to the beginning of the temporary zone.

If you do not frequently reboot your computer (once a day) or you are using your computer to manipulate large amounts of data, it is recommended to increase the size of the temporary zone.

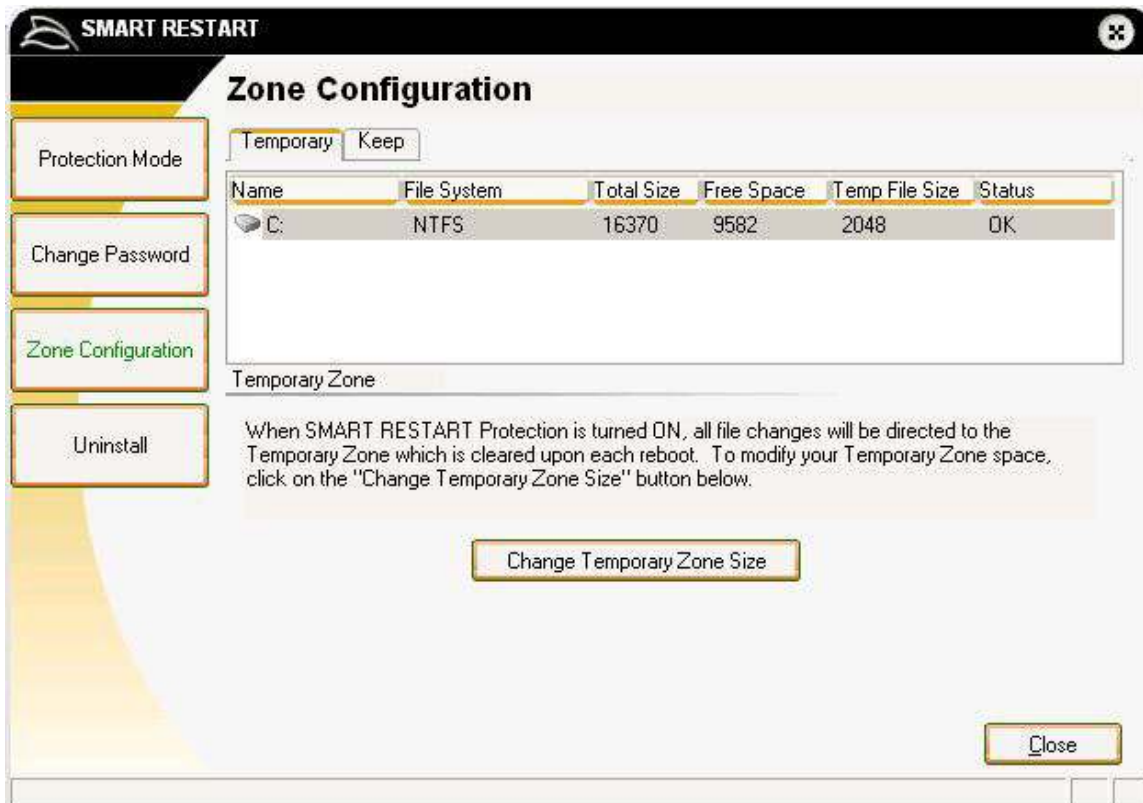
NOTE: The maximum size you will ever want to set the temporary zone to is half of the available space on the drive.

## **Steps:**

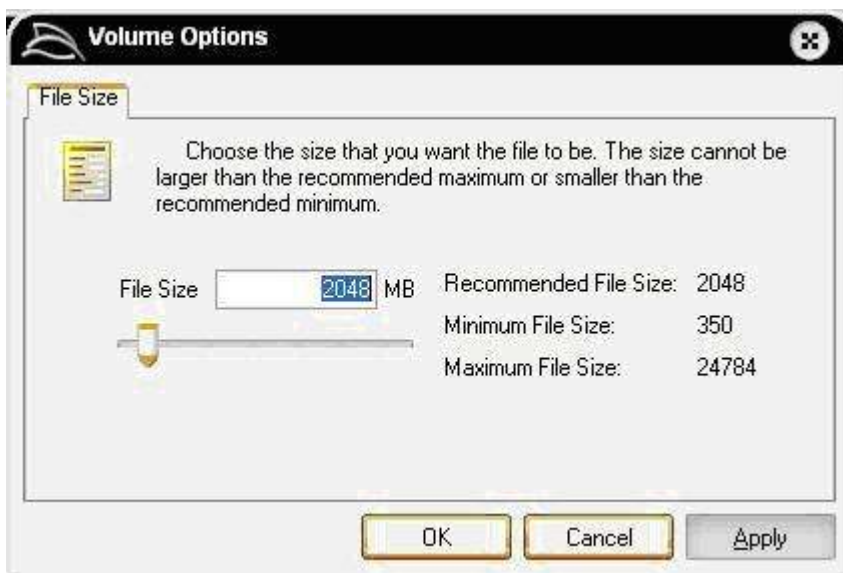
NOTE: SMART RESTART™ must be disabled prior to changing the size of the temporary zone.

- 1. Open the SMART RESTART™ application.**
- 2. Click on the “Zone Configuration” button.**

This will display a listing of the drives or partitions on your computer. You will want to highlight the drive whose temporary zone you wish to configure. In most cases there will only be one drive listed (the C: drive).



3. Click the “Change Temporary Zone Size” button in the “Temporary” tab.



4. In the Volume Options window, set the size of the temporary zone.

You can use the textfield box or the slider to set the size of the temporary zone. If you are selecting an additional partition and you want that partition to remain unprotected by SMART RESTART™, set the size of the temporary zone to zero.